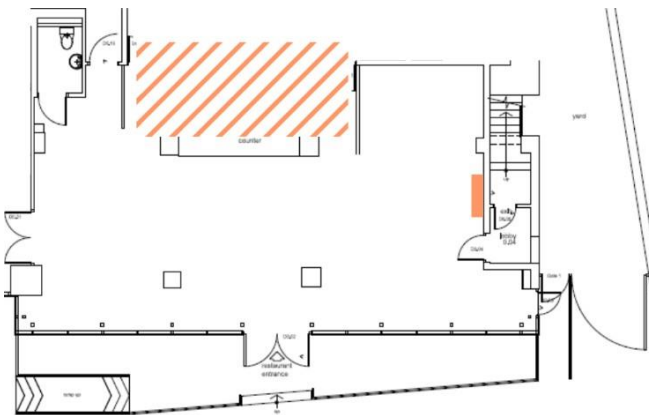




# café space



| capacity                         |    |
|----------------------------------|----|
| standing                         | 60 |
| rows of chairs<br>no tables      | 45 |
| tables with chairs<br>café style | 30 |

*the floor plan of the hire: the hashed area is our kitchen and bar area which is off limits to hirers, and the orange strip on the right is the hireable TV*

## a little bit about the space

Welcome to our event space: an independent, community café by London Bridge. The hireable space is located on the ground floor space with floor to ceiling windows, an assortment of tables, chairs, sofas and plants to set a comfy scene for your event hire. The tables, chairs and sofas can be kept in the café style for your hire, or pushed to the side to allow for chairs in rows or an open floor space for standing and mingling.

The space is accessible for wheelchair users, with permanent ramps into the space and an accessible bathroom within the café space, as detailed on our floor plan.

**we are best suited for:** corporate events, talks, workshops, networking events.

## rates

|   | corporate rate      | charity rate*     |
|---|---------------------|-------------------|
| Full day (min. 6 hours)   | £600 (+VAT)         | £400 (+VAT)       |
| Half day (4 hours)  | £350 (+VAT)         | £250 (+VAT)       |
| Hourly (only applies in addition to full/half day hire or bookings after 16:00) | £120 p/hour (+ VAT) | £80 p/hour (+VAT) |
| Full day café and kitchen (min. 6 hours)  | £750 (+VAT)         | £500 (+VAT)       |
| Half day café and kitchen   | £400 (+VAT)         | £300 (+VAT)       |

\*This applies to any organisation with a charity number

## hours

The space will be available to hire during the times below:

|                   |             |
|-------------------|-------------|
| Monday - Thursday | 08:00–20:30 |
| Friday            | 17:30–20:30 |
| Saturday          | 09:30–17:45 |
| Sunday            | 09:30–13:45 |

The closing time indicates when the space needs to be clean and vacated.

If you would like to extend the hire beyond this time, please mention at point of enquiry.

# catering and extras

## drinks

tea, coffee, and biscuits

£3.00 per person

## Juices

£2.95 per person

A selection of Rejuce bottles.

Apple, orange, and berries.

## soft drinks

£3.20

A selection of Karma Drinks bottles.

Gingerella, Lemony Lemonade, Karma Cola.

## breakfast

Croissant served with a selection of jams

£2.50 per person

## fruit

£1.00 per person

Grapes, apple, banana, satsuma

## selection of desserts

£3.50 per person

## yoghurt pot

£2.50 per person

Greek yoghurt, granola, homemade fruit of the forest compote

## lunch

selection of filled sourdough spianata and mezzelune

served with crisps\*

£7.50 per person

*Spianata is a kind of focaccia with a short leavening process. Low, crunchy outside and soft inside.*

*Mezzaluna' is Italian for 'half-moon', soft folded flat bread, made using extra virgin olive oil.*

Vegan "Toona mayo" (allergens: gluten (wheat, barley), celery.)

Egg salad, pickled cucumber, cress (allergens: gluten (wheat, rye), milk, egg, mustard)

Brie, onion chutney, mixed leaves (allergens: gluten (wheat, rye), milk.)

Cream "cheeze", sundried tomatoes, lettuce (allergens: gluten (wheat, barley), soya.)

## soup of the day (12oz)

£3.00 per person

\*Orders to be submitted at least one week before event.

## equipment

|                                   |               |
|-----------------------------------|---------------|
| Speaker (subject to availability) | £50.00 (+VAT) |
| TV with HDMI                      | £50.00 (+VAT) |

## booking the space

Enquire by completing the **booking form** and emailing it back to our team at [info@thebridge-uk.org](mailto:info@thebridge-uk.org). You're welcome to call us on 020 7089 6250 and our team can answer any further questions.

If you'd like to visit to view the space and talk through your requirements, please book in with the team ahead of time.